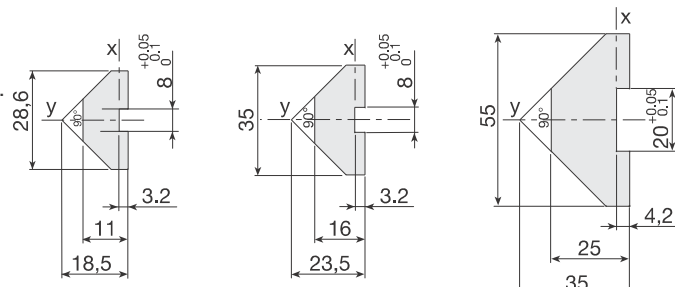


Steel V-shaped guide rails

Material: high-performance alloy steel: R > 900 MPa
 Hardened and tempered: core hardness 240 HB.
 Induction-hardened and polished. Track hardness > 58 HRC
 Guide rail 28.6x11 code 203.0012 has anti-oxidation coating.
 Anti-oxidation coating is available for all versions upon request.



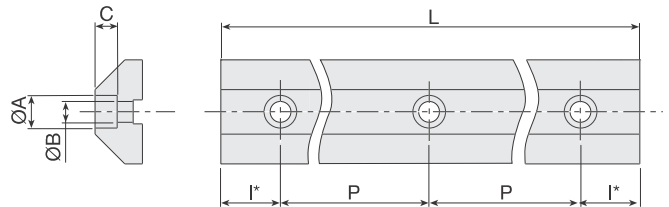
V-shaped guide rail 28.6x11 V-shaped guide rail 35x16 V-shaped guide rail 55x25

Features	28.6x11	35x16	55x25	
Moment of inertia Ix	2,148	7,932	41,906	mm ⁴
Moment of inertia Iy	14,490	36,405	194,636	mm ⁴
Weight	2	3.5	7.8	Kg/m

Machining: drilled guide rails with straight cut

Machining provided for guide rails with no joint. In addition to the code, please state the type of machining required by adding:

- **.L** V-shaped guide rails, length L, **not drilled**
- **.LF** V-shaped guide rails, length L, **drilled**



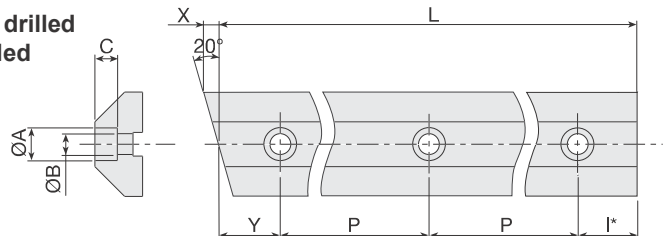
*: If "I" is more than 80 mm, a hole is added to the two ends of the guide rail. Centre-distance 20 for guide rails 203.0027/28; Center-distance 25 for guide rails 203.0122/0423

Size	Treatment	Max. Length	P	I	A	B	C	Code
28,6x11	hardened & tempered	3980	150	40	11	7	5	203.0008
28,6x11	hardened anti-oxidation	3980	150	40	11	7	5	203.0030
35x16	hardened & tempered	5900	150	25	11	7	7.5	203.0028
35x16	Induction-hardened	4000	100	50	11	7	7.5	203.0027
55x25	hardened & tempered	5900	200	50	18	11	11.5	203.0122
55x25	Induction-hardened	4000	150	25	18	11	11.5	203.0423

Machining: drilled guide rails with 1 bevel and 1 slanting cut

Machining provided for the crop down sizes of guide rail ends with joints. In addition to the code, please state the type of machining required by adding:

- **.LX** V-shaped guide rails with 1 slanting cut, length L, **not drilled**
- **.LFX** V-shaped guide rails with 1 slanting cut, length L, **drilled**



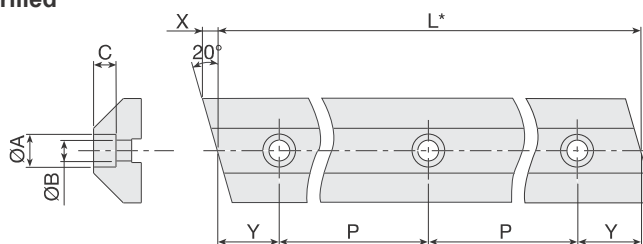
*: the first hole is drilled at a height of "Y", subsequent ones at a centre-distance of "P". If "I" is more than 80 mm, a hole is added to the end of the guide rail. Centre-distance 20 mm for guide rail 203.0027/28; Centre-distance 25 mm for guide rail 203.0122/0423.

Size	Treatment	Max. Length	P	Y	I	A	B	C	Code
28.6x11	hardened & tempered	3,850	150	50	50	11	7	5	203.0008
28.6x11	hardened anti-oxidation	3,850	150	50	50	11	7	5	203.0030
35x16	hardened & tempered	5,900	150	25	25	11	7	7.5	203.0028
35x16	Induction-hardened	4000	100	50	50	11	7	7.5	203.0027
55x25	hardened & tempered	5,900	200	25	75	18	11	11.5	203.0122
55x25	Induction-hardened	4000	150	25	25	18	11	11.5	203.0423

Machining: drilled guide rails with 2 slanting cuts

Machining provided for the intermediate crop down sizes of guide rail ends with multiple joints. In addition to the code, please state the type of machining required by adding:

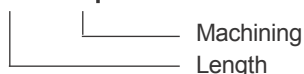
- **.LXX** V-shaped guide rails with 2 slanting cuts, length L, **not drilled**
- **.LFX** V-shaped guide rails with 2 slanting cuts, length L, **drilled**



*: in order to maintain a constant hole pitch, arrange the guide rails so that the length "L" is equal to: $n \cdot P + 2 \cdot Y$

Size	Treatment	Max. Length	P	Y	A	B	C	Code
28,6x11	hardened & tempered	3850	150	50	11	7	5	203.0008
28,6x11	indurita antioss.	3850	150	50	11	7	5	203.0030
35x16	hardened & tempered	5900	150	25	11	7	7.5	203.0028
35x16	Induction-hardened	4000	100	50	11	7	7.5	203.0027
55x25	hardened & tempered	5900	200	50	17	11	11.5	203.0122
55x25	Induction-hardened	4000	150	25	17	11	11.5	203.0423

EXAMPLE OF ORDER: n° 2 pieces cod203.0027 / 5150 . LFX + n°1 piece 203.0027 / 5840 . LFX



V-shaped guide rail assembly inserts

Material: C40 galvanized steel.

A and C: suitable for medium profiles (see pages 14 - 15)

B and D: suitable for load-bearing profiles (see pages 15 to 17)

*:Special drilling for M8 screws instead of M10 is required.

	Guide rails	Slot side	Screw	Code
A	35x16	8	M6x20	209.0298
B	35x16	12.5	M6x25	209.1855
C*	55x25	8	M8x30	209.0479
D	55x25	12.5	M10x30	209.0480